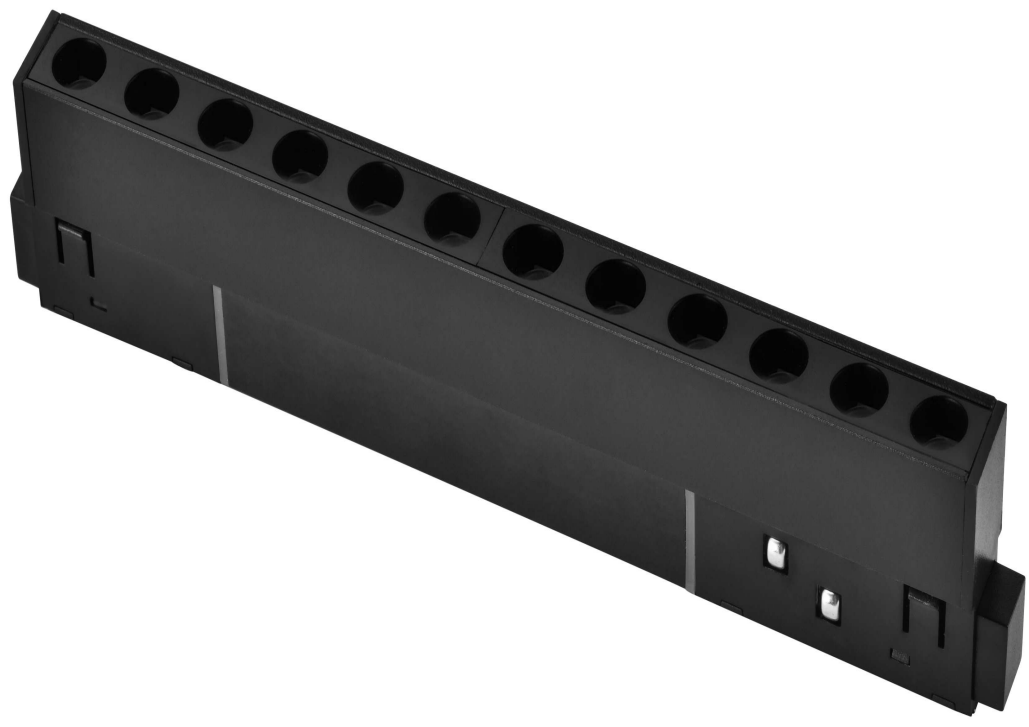


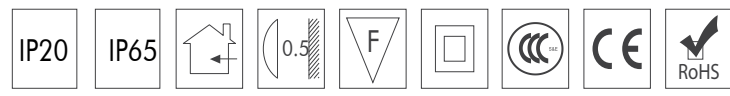
MAGNETIC TRACK LIGHT



Code : MT-LB-18K-L305-B

Product : GRILL 18W 48VDC

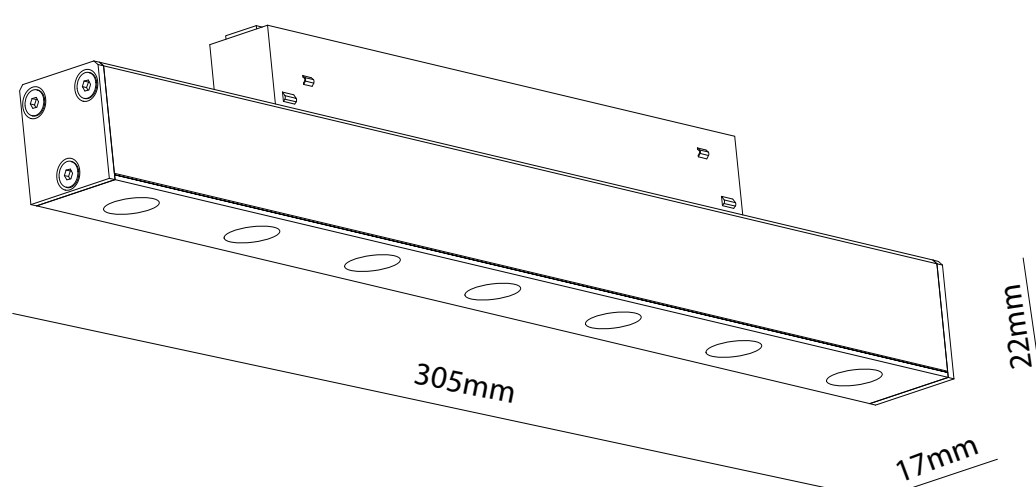
- Anywhere in the track, various products can be placed such as spots, linear & Pendant.
- Magnetic track rail with a thin and slim design.
- 48VDC Magnetic Track System.
- Available as a suspended surface-mounted and recessed trimless version.
- All Luminaires have a magnetic adapter. This eliminates the need for installation tools.
- Each system module can be individually controlled and dimmed with DALI option.



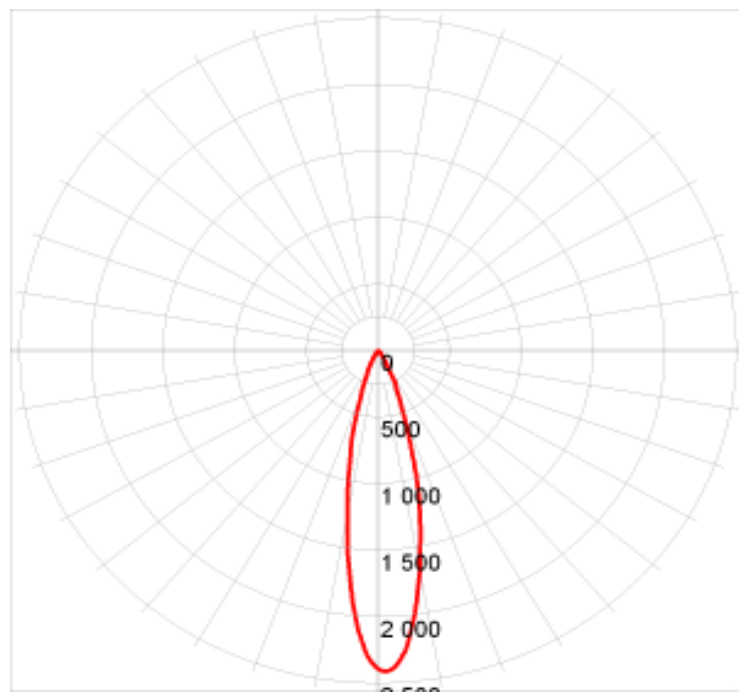
TECHNICAL DATA :

<p>High Efficiency 90-100lm/w</p>	<p>Power 18W</p>	<p>CCT 3000K / 4000K / 6000K</p>
<p>LED Source Osram LED</p>	<p>CRI RA>85</p>	<p>High Lumens 1620lm</p>
<p>Input Details 48 VDC</p>	<p>Beam Angle 24°/36°</p>	<p>Dimming Option SW/DA</p>
<p>IP Rating IP20</p>	<p>Size L205*W17*H44mm</p>	<p>Weight 280gm ±10%</p>
<p>MacAdam 3 step</p>	<p>Finish Black</p>	<p>Track Rail Surface, Recessed, Recessed Slot</p>
<p>Temperature-Ambient Upto 40° C</p>	<p>Installation Push & Lock</p>	<p>Long Life Time 50,000 hrs</p>

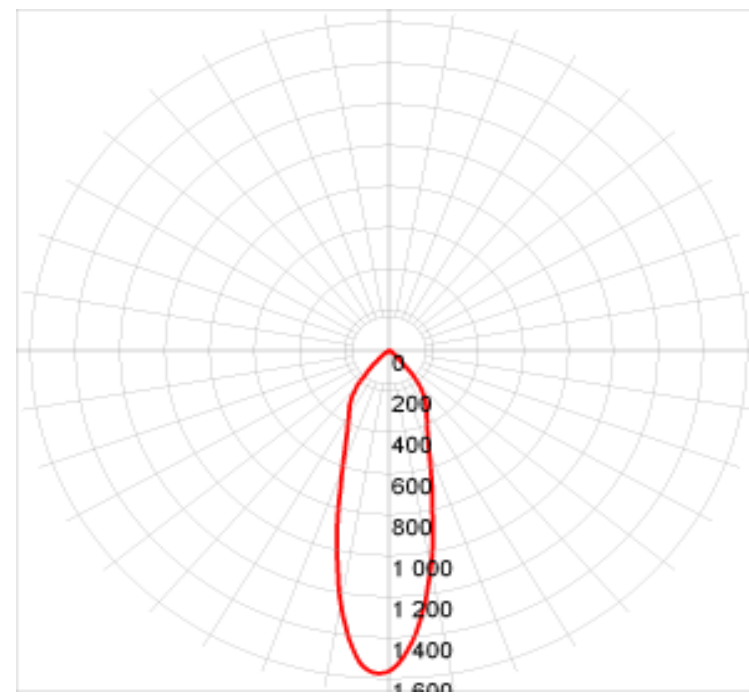
DIMENSIONS :



PHOTOMETRICS:



12W, 24°



12W, 36°

ORDER INFORMATION :



Series
Grill-MT-LB



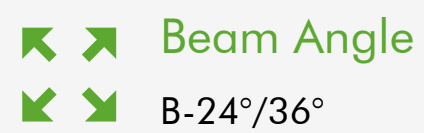
Wattage
W-6, 12, 18



CCT
K- 3000, 4000, 6000



Length
L205, L305



Beam Angle
B-24°/36°



Dimming Option
Blank- ON/OFF, DA-Dali

TRACK RAIL :

Recessed Track
MT-TR-R15-5



Surface/Suspended Track
MT-TR-S15



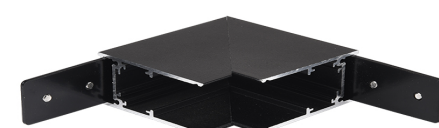
Recessed slot
MT-TR-R15-2B



ACCESSORIES:



Top Cover



L- Connector



Input module



Led Driver



L-Connector



Direct Module



Suspension Kit



Corner Module