

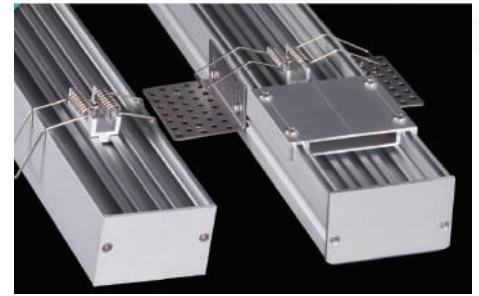
# Brio Series


## LED ALUMINUM PROFILE


Model No. BR-TR-ALP087X


- Creates a homogenous light with uniform intensity
- The extrusion made from high quality aluminum
- Suitable for strips width upto 50mm wide
- The extrusion can be trimless recessed type
- Customized length upto 4 meters
- Anodized / Powder coated
- Joiners are optional
- Excellent heat sink

Applications- Arcitectoral & Decorative.



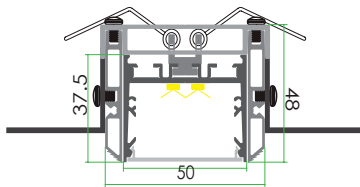
 Beam angle: 80°

 Weight:<1.77kg/m

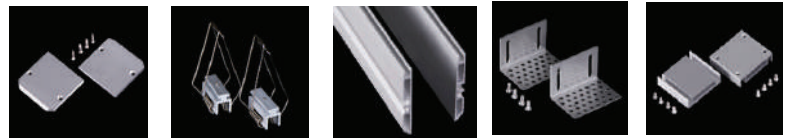
 Max power:<60w/m

 Mounting: Trimless Recessed


## DIMENSION



## ACCESSORIES



## DIFFUSER

Diffuser type		
	Opal	Frosted
Model no.	BR-TR-ALP087M	BR-TR-ALP087F
Transmittance	67%	90%

## INSTALLATION

