

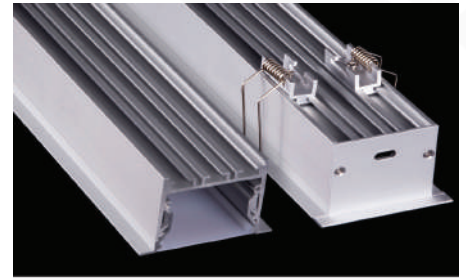
# Brio Series

## LED ALUMINUM PROFILE

Model No. BR-PR-ALP081X

- Creates a homogenous light with uniform intensity
- The extrusion made from high quality aluminum
- Suitable for strips width upto 46mm wide
- The extrusion can be recessed type
- Customized length upto 4 meters
- Anodized / Powder coated
- Surface mounting brackets are optional
- Excellent heat sink

Applications- Arcitectoral, highrise ceilings & coves.



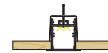
Beam angle: 70°



Weight:<1.43kg/m

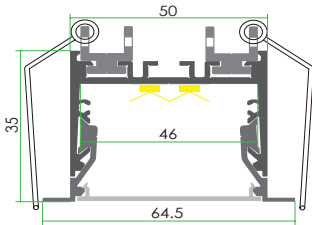


Max power:<60w/m



Mounting: Recessed

## DIMENSION



## ACCESSORIES



## DIFFUSER

Diffuser type		
	Opal	Frosted
Model no.	BR-PR-ALP081M	BR-PR-ALP081F
Transmittance	67%	90%

## INSTALLATION

