

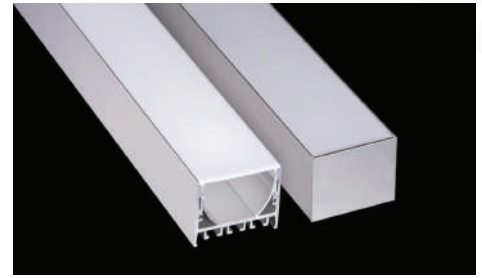
Brio Series

LED ALUMINUM PROFILE

Model No. BR-PS-ALP074X

- Creates a homogenous light with uniform intensity
- The extrusion made from high quality aluminum
- Suitable for strips width upto 60mm wide
- The extrusion can be suspension type
- Customized length upto 4 meters
- Anodized / Powder coated
- Surface mounting brackets are optional
- Excellent heat sink

Applications- Arcitectural, highrise ceilings & coves.



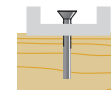
Beam angle: 110°



Weight:<1.26kg/m

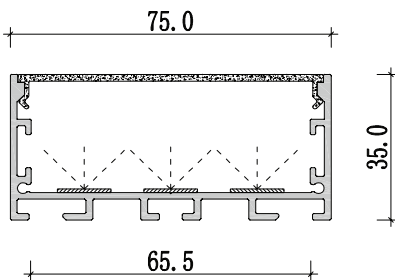


Max power:<60w/m

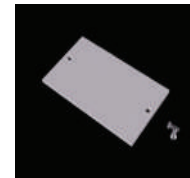


Mounting: Surface/
Suspension

DIMENSION



ACCESSORIES



DIFFUSER

Diffuser type			
	Opal	Frosted	Clear
Model no.	BR-PS-ALP074M	BR-PS-ALP074F	BR-PS-ALP074C
Transmittance	63%	89%	95%

INSTALLATION

